

RIVERHOMES

Riverside Quarter
Wandsworth SW15

£700,000
Leasehold



Riverside Quarter Wandsworth SW15

Offering approx. 959 sq. ft of stylish living space, this exceptional two-bedroom apartment boasts uninterrupted views of the River Thames and Central London. A spacious entrance hall leads to an impressive open-plan kitchen, dining, and living area, featuring floor-to-ceiling bifold doors that open onto a large private balcony—perfect for entertaining and enjoying the view.

The sleek kitchen includes a central island and ample storage. Both double bedrooms are well-sized, with the primary benefitting from an ensuite, built-in wardrobes, and direct balcony access.

modern main bathroom, generous storage, secure underground parking, and access to a residents' gym and pool complete the package.

Ideally located near Wandsworth Park, the Thames Path, and Southside Shopping Centre, with excellent transport links via East Putney (District Line), Wandsworth Town Station, and Thames Clipper river services.

KEY FEATURES

Two bedroom apartment

Direct river views

Open-plan kitchen and living area

Floor-to-ceiling bifold doors

Large private balcony

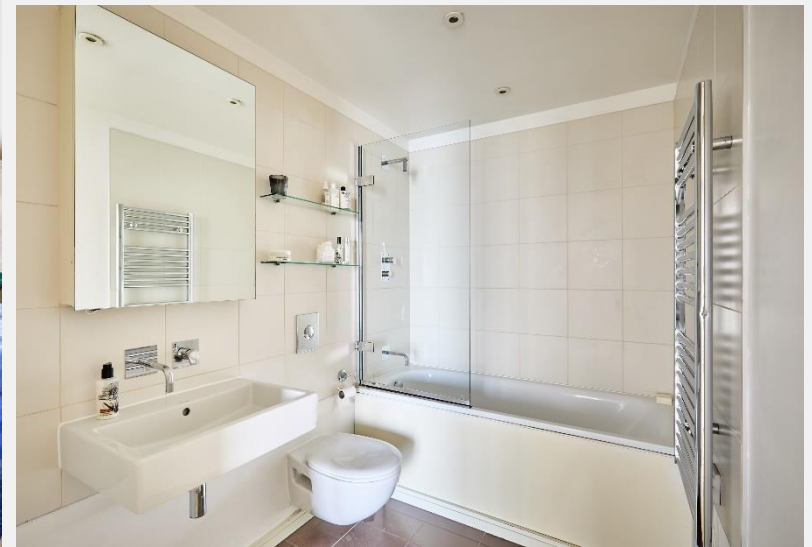
Ample storage

Secure underground parking

Access to residents' gym and pool

Ideally located near Wandsworth Park and Southside Shopping Centre, with excellent transport links





ENERGY PERFORMANCE CERTIFICATE

Score	Energy rating	Current	Potential
92+	A		
81-91	B	82 B	82 B
69-80	C		
55-68	D		
39-54	E		
21-38	F		
1-20	G		

KEY INFORMATION

Local authority:	London Borough of Wandsworth
Internal area:	968 sq. ft. / 89.90 sq. m.
Garden area:	Private Balcony
No. of bedrooms:	2
Council tax:	Band F
Lease length:	999 from 1 st January 2002
Service charges:	£7,000 per year approx..

RIVERSIDE QUARTER, WANDSWORTH SW18



World Waterside Ltd trading as riverhomes for themselves and its clients give notice that 1: They are not authorised to make or give any representations or warranties in relation to the property either here or elsewhere, either on their own behalf or on behalf of their client or otherwise. 2: These particulars do not form part of any offer or contract and must not be relied upon as statements or representations of fact. Any areas, measurements or distances are approximate. The text, photographs and plans are for guidance only and are not necessarily comprehensive. 3: It should not be assumed that the property has all necessary planning, building regulation or other consents and any services, equipment or facilities have not been tested. 4: Lease details, service charges, ground rent (where applicable) and council tax are given as a guide only and should be checked and confirmed by your Solicitor prior to exchange of contracts. 5: They assume no responsibility and any intending purchasers or tenants must satisfy themselves by inspection or otherwise as to the correctness of each of the statements contained within these particulars. If you require clarification of any points please contact us.