



West India Quay Docklands E14

A generously proportioned two bedroom apartment in a prestigious, modern development on the water's edge of Canary Wharf. The apartment, located on the 26th floor, is sunny throughout and offers skyline and waterside views. In excess of 1350 sq. ft., this apartment comprises a fully integrated open plan kitchen, spacious reception area with room to dine. The large master bedroom is equipped with fitted wardrobes and an ensuite bathroom. There is a further double bedroom and family bathroom. The property is finished to a very high standard and benefits from a 24hr concierge and secure underground parking. Located in the heart of the Canary Wharf & only moments away from the West India DLR station.

KEY FEATURES

Two bedroom apartment

Prestigious modern development

Fantastic skyline and waterside views

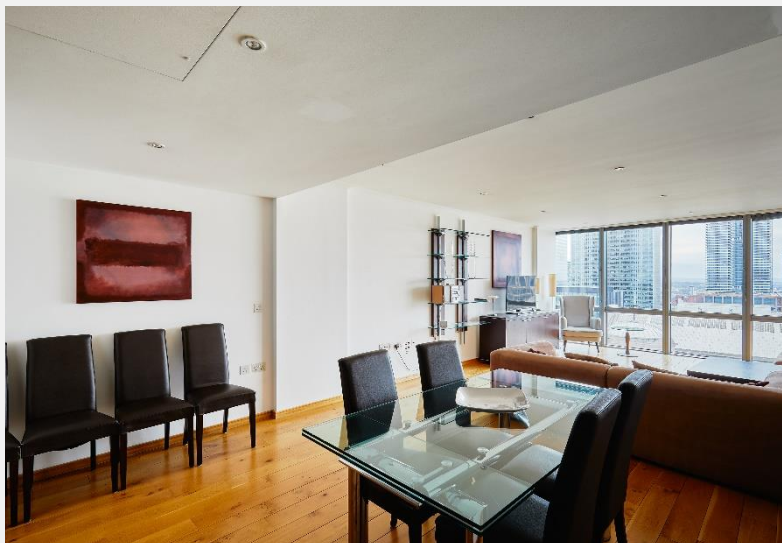
High end interior

Open plan kitchen / reception

Conveniently located close to shops, restaurants and public transport

Local Authority: London Borough of Tower Hamlets

Council tax: Band G - £2,635.04 for 2023/24





ENERGY PERFORMANCE CERTIFICATE

Score	Energy rating	Current	Potential
92+	A		
81-91	B	87 B	88 B
69-80	C		
55-68	D		
39-54	E		
21-38	F		
1-20	G		

KEY INFORMATION

- Local authority:

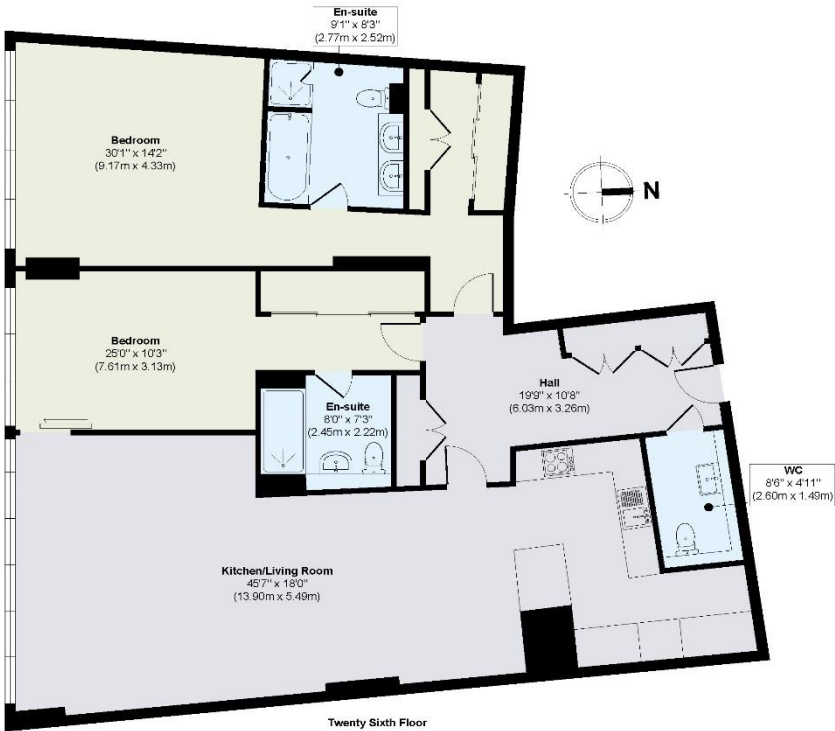
London Borough of Tower Hamlets
- Internal area:

1,557 sq. ft. / 144.69 sq. m.
- Council tax band:

G
- No. of bedrooms:

2

WEST INDIA QUAY, DOCKLANDS, E14



Approx. Gross Internal Floor Area 1557 sq. ft / 144.69 sq. m

Illustration for identification purposes only, measurements are approximate, not to scale.

World Waterside Ltd trading as riverhomes for themselves and its clients give notice that 1: They are not authorised to make or give any representations or warranties in relation to the property either here or elsewhere, either on their own behalf or on behalf of their client or otherwise. 2: These particulars do not form part of any offer or contract and must not be relied upon as statements or representations of fact. Any areas, measurements or distances are approximate. The text, photographs and plans are for guidance only and are not necessarily comprehensive. 3: It should not be assumed that the property has all necessary planning, building regulation or other consents and any services, equipment or facilities have not been tested. 4: Lease details, service charges, ground rent (where applicable) and council tax are given as a guide only and should be checked and confirmed by your Solicitor prior to exchange of contracts. 5: They assume no responsibility and any intending purchasers or tenants must satisfy themselves by inspection or otherwise as to the correctness of each of the statements contained within these particulars. If you require clarification of any points please contact us.