

RIVERHOMES

Riverside Quarter
Wandsworth SW18

£565,000
Leasehold



Riverside Quarter Wandsworth SW18

A stunning one-bedroom contemporary apartment boasting direct river views, set on the second floor of the sought-after Riverside Quarter development. This spacious home features a bright, double-aspect reception area with an open-plan kitchen, seamlessly extending onto a private balcony with breathtaking views of the Thames. The generously sized double bedroom is complemented by a stylish bathroom and a welcoming entrance hall.

Residents benefit from a secure underground parking space, 24-hour concierge and security, as well as access to an exclusive swimming pool and two gyms. Perfectly positioned adjacent to Wandsworth Park, the development enjoys excellent transport links, including the River Taxi from Riverside Quarter Pier, and is within easy reach of East Putney Underground and Wandsworth Town National Rail Station. The vibrant amenities of Putney High Street are just moments away, making this an exceptional riverside living opportunity.

Residents benefit from a secure underground parking space, 24-hour concierge and security, as

KEY FEATURES

One double bedroom

Spacious reception / dining area

Two private balconies

Secure underground parking

24-hour concierge service

Access to swimming pool and two gyms

Adjacent to Wandsworth Park

River taxi to the City

**Conveniently located close to shops,
restaurants and public transport**





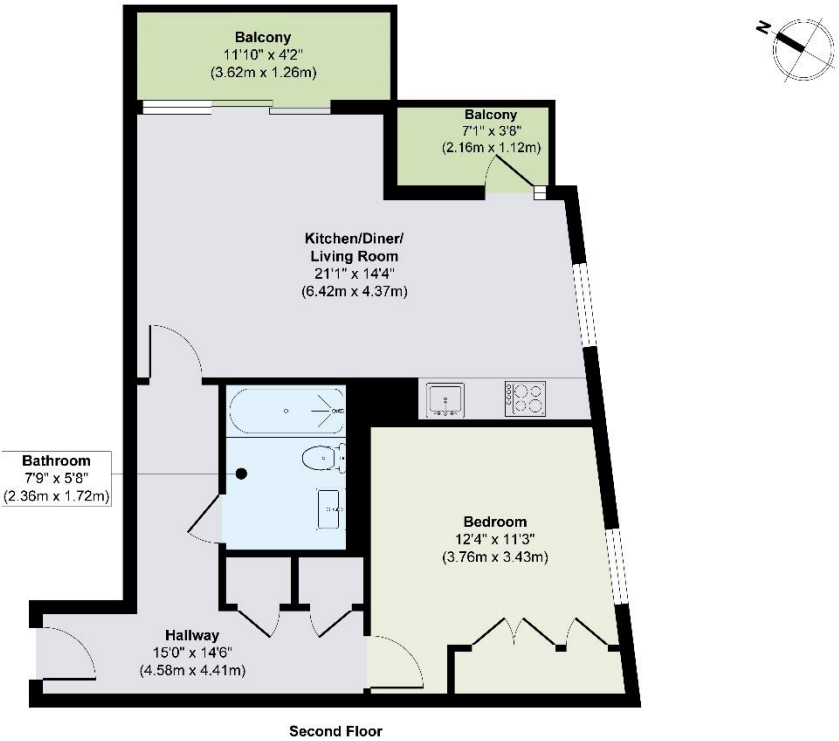
ENERGY PERFORMANCE CERTIFICATE

Score	Energy rating	Current	Potential
92+	A		
81-91	B	81 B	81 B
69-80	C		
55-68	D		
39-54	E		
21-38	F		
1-20	G		

KEY INFORMATION

Local authority:	London Borough of Wandsworth
Internal area:	559 sq. ft. / 51.97 sq. m.
Garden area:	Balcony
No. of bedrooms:	1
Council tax:	Band E
Service charges:	£5,000 per year approx.
Lease length:	999 years from May 2006

RIVERSIDE QUARTER, WANDSWORTH SW18



World Waterside Ltd trading as riverhomes for themselves and its clients give notice that 1: They are not authorised to make or give any representations or warranties in relation to the property either here or elsewhere, either on their own behalf or on behalf of their client or otherwise. 2: These particulars do not form part of any offer or contract and must not be relied upon as statements or representations of fact. Any areas, measurements or distances are approximate. The text, photographs and plans are for guidance only and are not necessarily comprehensive. 3: It should not be assumed that the property has all necessary planning, building regulation or other consents and any services, equipment or facilities have not been tested. 4: Lease details, service charges, ground rent (where applicable) and council tax are given as a guide only and should be checked and confirmed by your Solicitor prior to exchange of contracts. 5: They assume no responsibility and any intending purchasers or tenants must satisfy themselves by inspection or otherwise as to the correctness of each of the statements contained within these particulars. If you require clarification of any points please contact us.