



## Albion Quay Battersea SW11

A wonderful opportunity to rent a spacious two bedroom Houseboat within the bow of a Belgian Barge. With generous proportions throughout, the split level living space benefits from an open plan kitchen, good storage, and is bright and sunny with well placed skylights and portholes. The accommodation further comprises a sunny master bedroom with ensuite bathroom and dressing room. There is a second good size bedroom with ensuite shower room. Further benefits include a sun deck and houseboat benefits from hardwood floors throughout.

Albion Quay is a small private mooring located in Battersea located close to Battersea Square which has been attractively landscaped and part pedestrianised and is well known for its open-air cafés and restaurants. Underground and National Rail services are located at Clapham Junction, the area is also well serviced by local buses and the Thames Clipper riverboat service at Plantation Wharf Pier.

### KEY FEATURES

**Two bedroom houseboat**

**Split level living space**

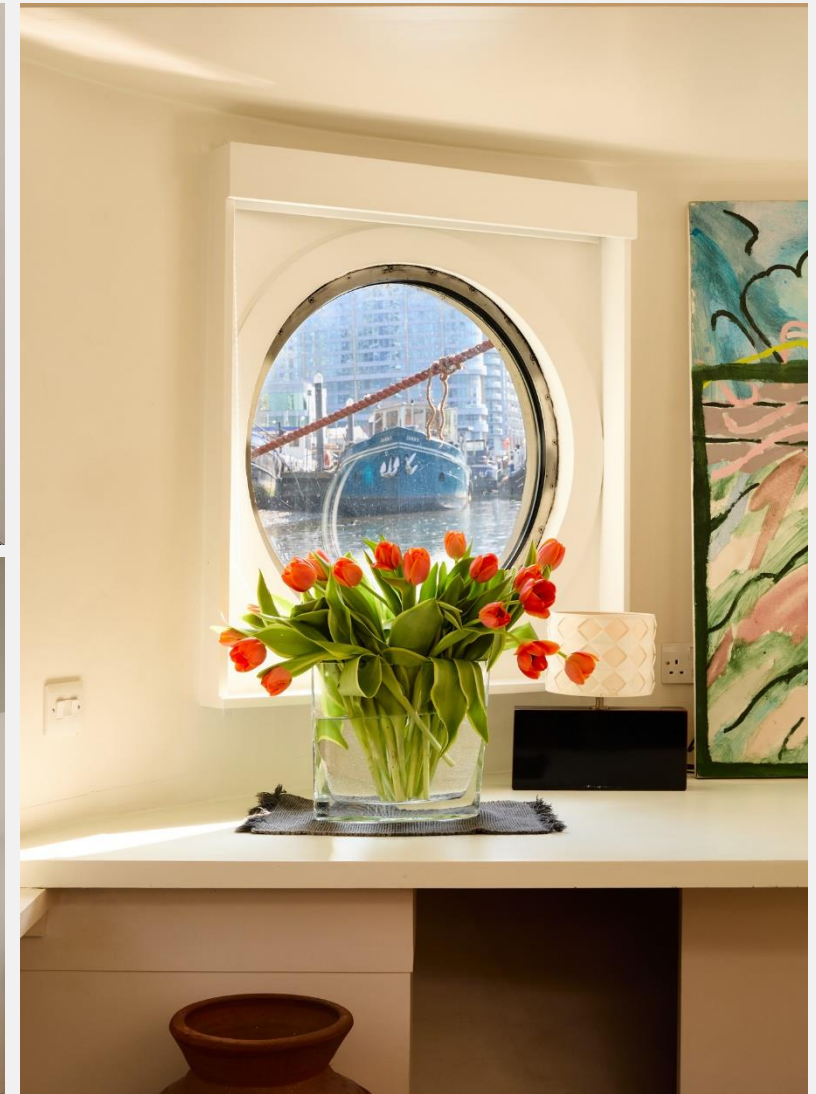
**Ample storage**

**En suite bathroom**

**Sunny throughout**

**Furnished**

**Conveniently located close to shops, restaurants and public transport**

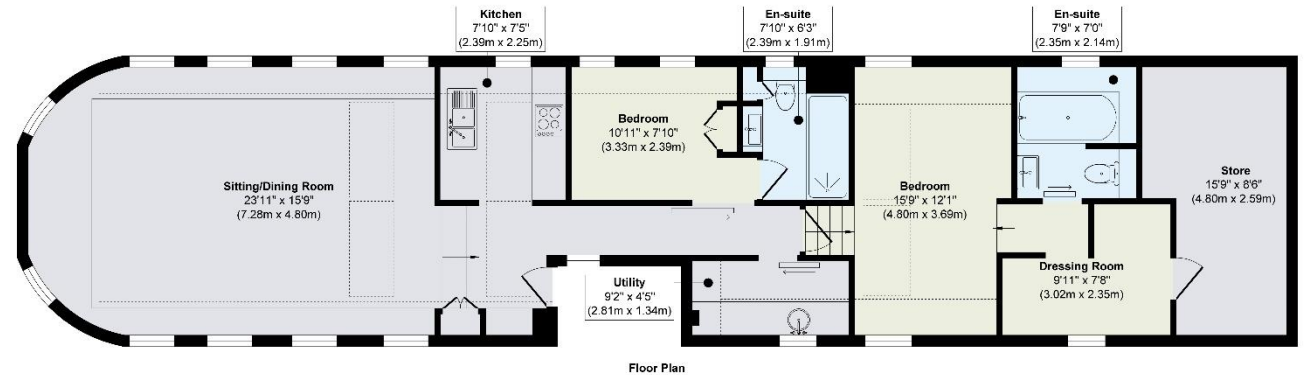




## KEY INFORMATION

<b>Local authority:</b>	Richmond Upon Thames
<b>Internal area:</b>	1,108 sq. ft. / 102.90 sq. m.
<b>Deck area:</b>	Sun deck
<b>No. of bedrooms:</b>	2
<b>Council tax</b>	Band A

## LOMBARD ROAD, SW11



Floor Plan

**Approx. Gross Internal Floor Area 1108 sq. ft / 102.90 sq. m**

Illustration for identification purposes only, measurements are approximate, not to scale.