

RIVERHOMES

Riverside Quarter
Wandsworth SW18

£735,000
Leasehold



Riverside Quarter Wandsworth SW18

This beautifully presented eighth-floor apartment offers bright, spacious living in one of London's most sought-after riverside developments, with spectacular views of the River Thames.

The accommodation features a stylish open-plan reception room, where floor-to-ceiling glass doors frame breathtaking river vistas and open onto a private west-facing balcony—perfect for enjoying golden-hour sunsets over the water. The sleek, integrated kitchen is fitted with high-end appliances and ample storage, making it an ideal space for entertaining while taking in the tranquil Thames backdrop.

The principal bedroom boasts bespoke built-in wardrobes and a luxuriously appointed en suite, complete with a walk-in shower—an elegant retreat after

a day exploring the riverside. The second bedroom also benefits from built-in wardrobes and enjoys access to a separate, elegantly designed family bathroom.

Riverside Quarter offers outstanding 24-hour security and concierge services, alongside exclusive residents' leisure facilities, including two state-of-the-art gyms and swimming pool all designed to enhance the riverside lifestyle. The development also features an on-site convenience store for added everyday ease.

KEY FEATURES

2 double bedrooms

Open plan reception / dining area

Private balcony

Ample storage

Comfort air cooling and underfloor heating

24-hour concierge service

Secure underground parking space

Access to swimming pool and gyms

**Conveniently located close to shops,
restaurants and public transport**



Nestled on the banks of the Thames, Riverside Quarter provides direct access to scenic river walks and waterside cafés, offering a serene escape from city life. The Riverbus service, just moments away, offers a picturesque and convenient commute into central London, while Wandsworth Town overground, Putney rail station, East Putney and Putney Bridge underground station provide excellent alternative transport links. The 485 bus, stopping within the development, offers a direct route to Putney Town Centre, connecting to multiple underground lines and on to Barnes. Additionally, the nearby A3 ensures easy access out of London.



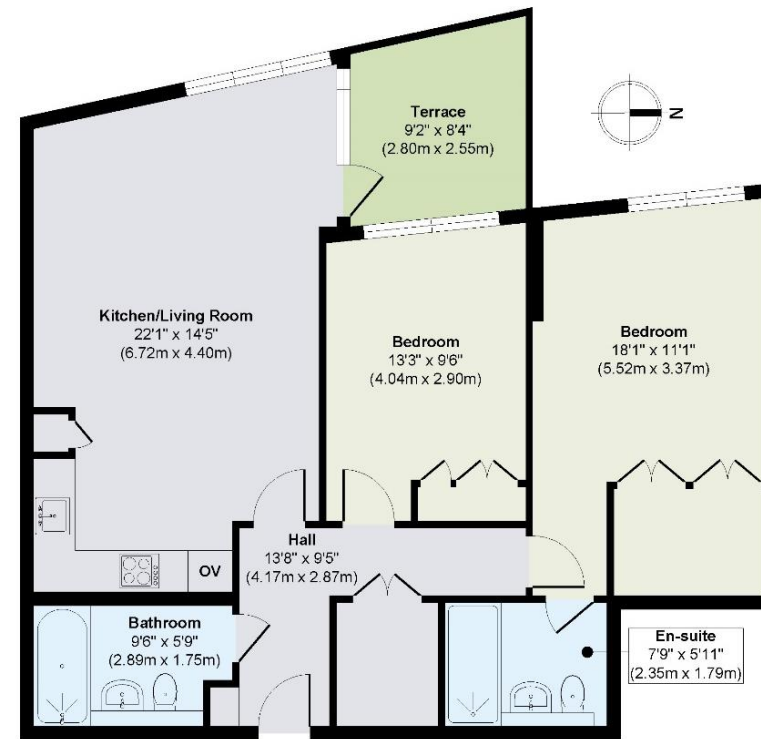
ENERGY PERFORMANCE CERTIFICATE

Score	Energy rating	Current	Potential
92+	A		
81-91	B	83 B	83 B
69-80	C		
55-68	D		
39-54	E		
21-38	F		
1-20	G		

KEY INFORMATION

Local authority:	London borough of Wandsworth
Internal area:	878 sq. ft. / 81.59 sq. m.
Garden area:	Balcony
Council tax band:	F
Ground rent:	£500 per year
Service charges:	£6,400 per year approx.
Lease length:	999 years from 1 January 2012

RIVERSIDE QUARTER, WANDSWORTH SW18



Eighth Floor