



Zephyr Riverside Chelsea SW10

This is a brand new, 1,727 sq. ft two bedroom houseboat moored on prestigious Cheyne Walk. Enjoying exceptional river views and split over two levels, this stylish floating home has two double bedrooms with en-suite bathrooms. The open plan dining/kitchen/living space provides direct access to the spacious sun deck with sensational views across the Thames. The fully integrated kitchen has a large range-style oven, induction hob, dishwasher, fridge and freezer. There is a separate utility/laundry room, cloakroom and a store room. The en suite in the primary bedroom also has river views.

There is air conditioning and climate control and the bathrooms have underfloor heating.

With all the comforts of a typical home such as direct mains electricity, water, sewerage, high speed wi-fi, all residents of this charming mooring also benefit from a night watchman, CCTV, concierge and an on-site maintenance team. Cheyne Walk is close to a number of transport options; the green spaces of Battersea Park and the shopping and leisure amenities of Kings Road and Sloane Square.

KEY FEATURES

Brand new houseboat

Two double bedrooms with dressing rooms

Two bathrooms

Spacious sun deck

Separate utility / laundry room

Separate cloakroom

High-speed wifi

Air conditioning and climate control

Mains electricity, water, sewerage

Night watchman and CCTV

Conveniently located close to restaurants, shops and public transport

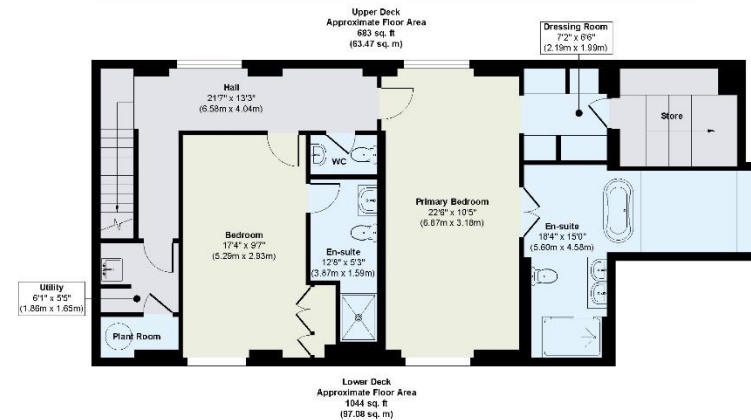




KEY INFORMATION

Local authority:	Royal Borough of Kensington and Chelsea
Internal area:	1,727 sq. ft. / 160.55 sq. m.
Garden area:	Deck
No. of bedrooms:	2

CHEYNE WALK, CHELSEA SW10



Approx. Gross Internal Floor Area 1727 sq. ft / 160.55 sq. m

Illustration for identification purposes only, measurements are approximate, not to scale.