

RIVERHOMES

**Kenilworth Court
Putney SW15**

**£750,000
Leasehold**



Kenilworth Court Putney SW15

This exquisite Victorian mansion apartment offers an abundance of light, space, and character, paired with captivating views of the River Thames from the reception room and principal bedrooms.

Spanning nearly 900 square feet, the residence combines timeless elegance with modern convenience. It features two beautifully proportioned double bedrooms, a delightful bay-fronted reception room with warm wood flooring, a bespoke kitchen designed for both style and function, and a luxurious, impeccably finished bathroom.

Set within the prestigious Kenilworth Court, a meticulously maintained mansion block, this property exudes charm and exclusivity. Positioned just moments from the tranquil banks of the Thames, it is ideally located near the artisan cafés, chic bars, and fine dining establishments of Lower Richmond Road, as well as the boutique shopping and amenities of Putney High Street.

The apartment enjoys exceptional transport links, with Putney Bridge tube station, Putney mainline station, and Putney Pier—offering scenic riverboat commutes to central London—all within a short stroll.

KEY FEATURES

2 double bedrooms

Bay-fronted reception room

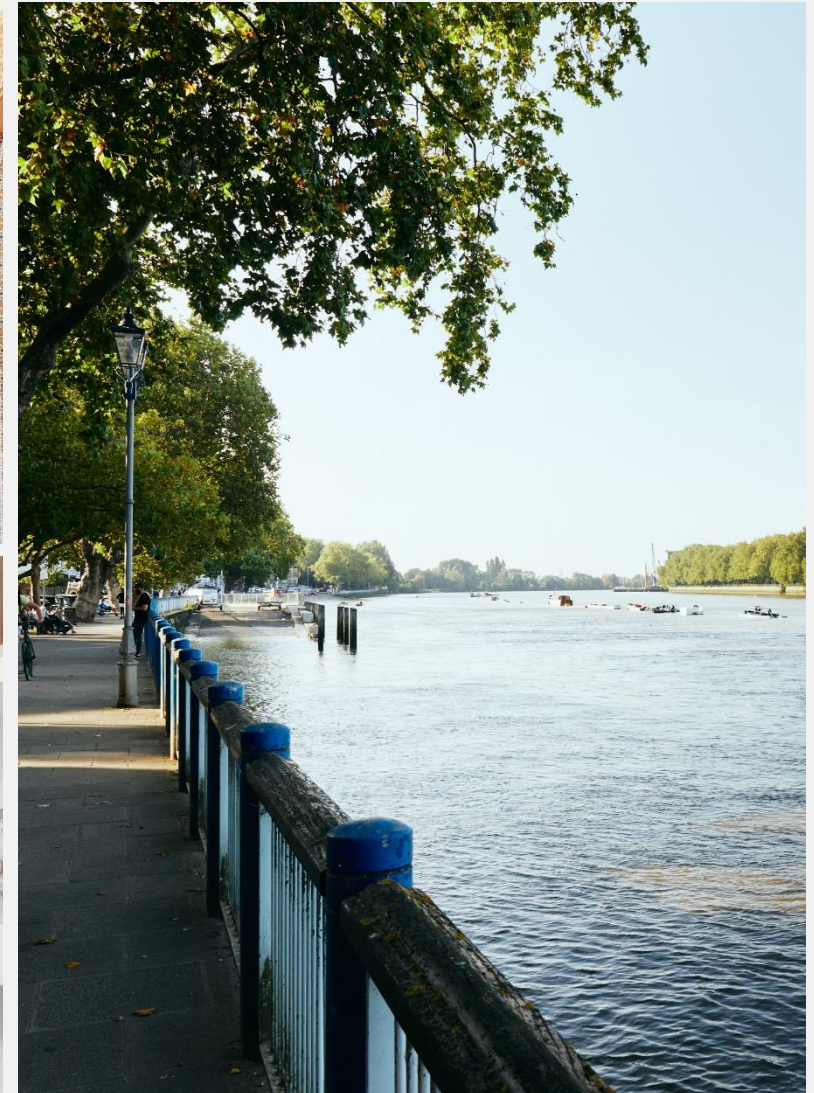
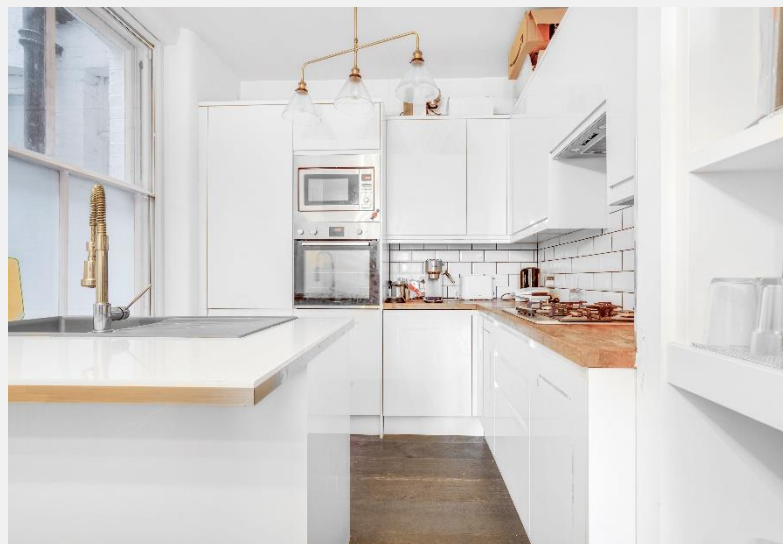
Good size separate kitchen

Luxurious finished bathroom

Well maintained gated communal garden

Easy access to public transport and local shops

Views of the River Thames



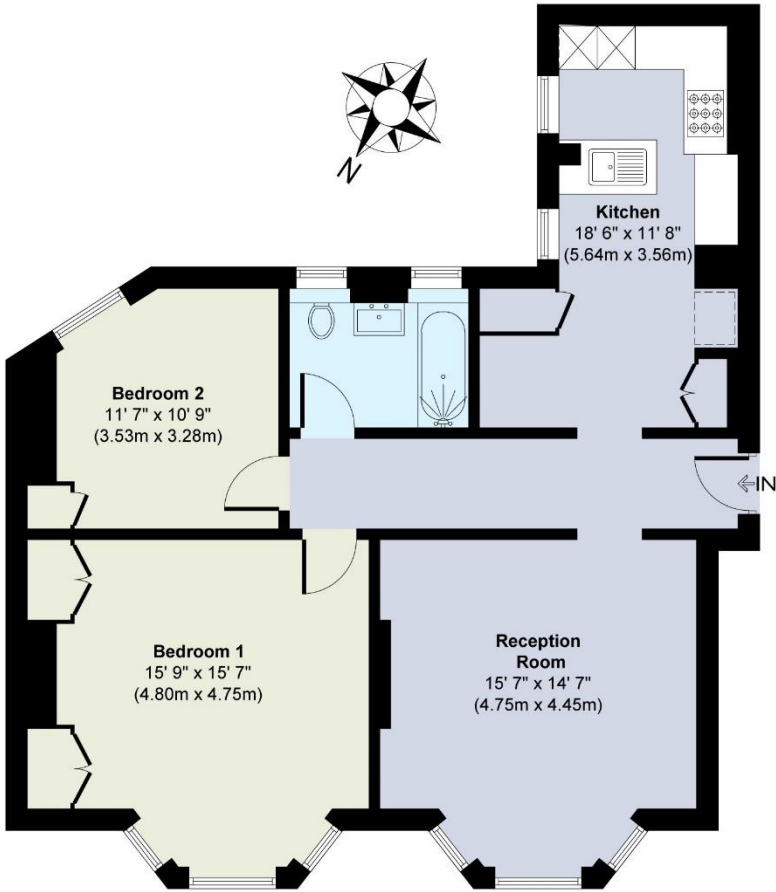


ENERGY PERFORMANCE CERTIFICATE

Score	Energy rating	Current	Potential
92+	A		
81-91	B		81 B
69-80	C	73 C	
55-68	D		
39-54	E		
21-38	F		
1-20	G		

KEY INFORMATION

Local authority:	London Borough of Wandsworth
Internal area:	895 sq. ft. / 83 sq. m.
Garden area:	Gated communal garden
No. of bedrooms:	2
Council tax:	Band E
Service charge:	£4,000 per year approx.
Lease length:	157 years remaining



First Floor