

# RIVERHOMES

Limehouse Waterside & Marina  
Limehouse E14

£190,000  
Leisure mooring





## Limehouse Waterside & Marina Limehouse E14

A different kind of home from home. Compact, sleek, refined, the M Series M250 is our most versatile craft yet. Whether it's for a much-needed holiday, a working weekend, or simply taking time to enjoy all-round blue health benefits, the M250 provides the ultimate marina experience. What sets the M250 apart is the ingenious use of space, making for a light-filled lounge and bedroom – both with balconies – partitioned by a fully-equipped kitchen and bathroom.

Limehouse Waterside & Marina, situated between the City of London and Canary Wharf, offers a unique waterside

living experience in the heart of the city. This modern marina serves as a gateway between the River Thames and over 2,000 miles of navigable canals and rivers. It features secure moorings with CCTV, laundry facilities, showers, and Wi-Fi. Surrounded by cobbled streets, historic riverside pubs, and excellent restaurants, the marina creates a tranquil oasis amidst the bustling city. With Limehouse DLR station nearby, residents enjoy quick access to central London and its many attractions.

Leisure mooring - no council tax.

Mooring charge £12,482.80 approx. per annum.



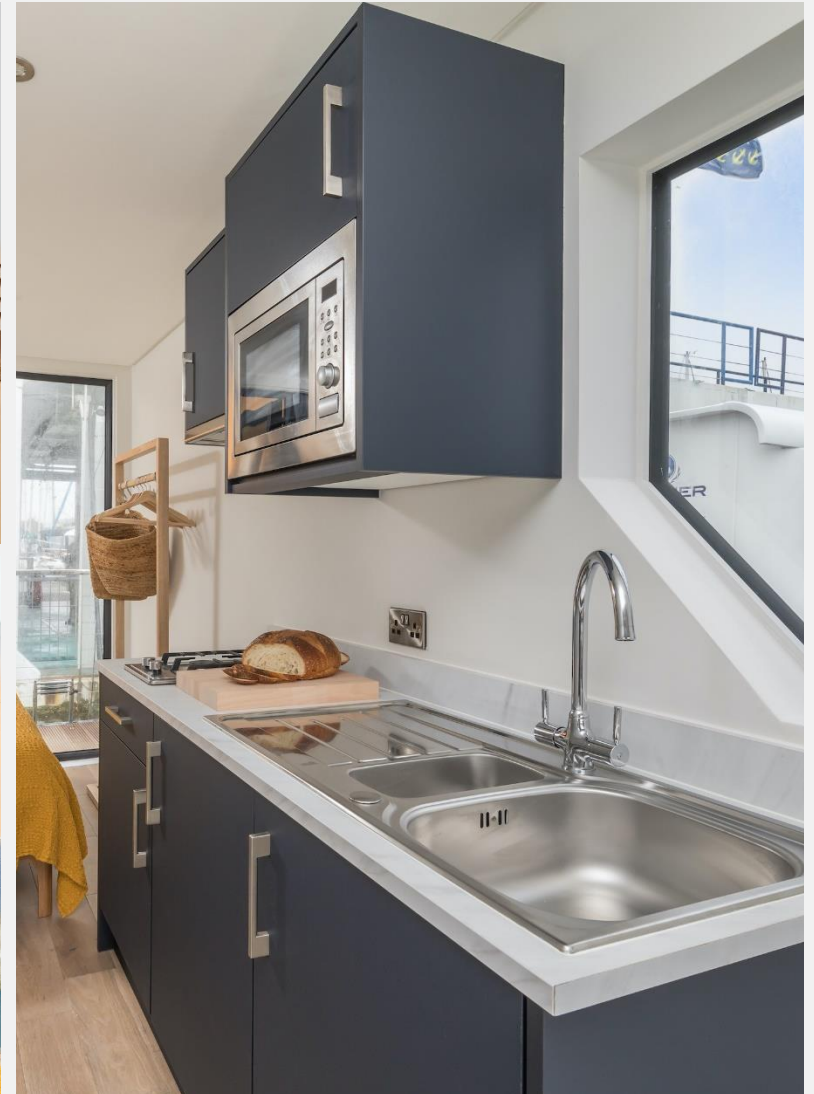


## Limehouse Waterside & Marina

### Limehouse E14

#### KEY FEATURES

- New Build**
- One bedroom houseboat**
- Full kitchen**
- Shower room**
- Two balconies**
- Charming marina**







Limehouse Waterside & Marina

Limehouse E14

£190,000

Leisure mooring

KEY INFORMATION	
Local authority:	London Borough of Tower Hamlets
Internal area:	258 sq. ft. / 23.96 sq. m.
No. of bedrooms:	1
Council tax band:	Exempt – Leisure mooring
Mooring charge:	£12,482.80 approx. per annum

