



Lots Ait Brentford TW8

Vrouwe Anna is an exceptional example of a 1930 built Belgian Spitz barge. Measuring 29.4m x 6.0m this barge offers brilliantly designed living accommodation throughout. Currently berthed at Lot's Ait in Brentford on a residential mooring licence which can be assigned upon purchase. Mooring charges are £1,500 pcm approx. with a maintenance fee of £400 pcm approx. The boat,

which is presented in impeccable condition, offers two double cabins and a further single cabin, 37 ft. open plan kitchen to the saloon reception room, panelled wheel house with panoramic views of the River Thames and benefits from excellent built in storage throughout. Brentford national rail station is an 11 minute walk and Kew Bridge national rail station is a 13 minute walk.

KEY FEATURES

1930 built Belgian Spitz barge

Two double cabins

One single cabin

Open plan kitchen to the saloon reception room

Excellent built in storage throughout

Panelled wheel house

Panoramic views of the River Thames

Mooring charges: £1,500 monthly approx.

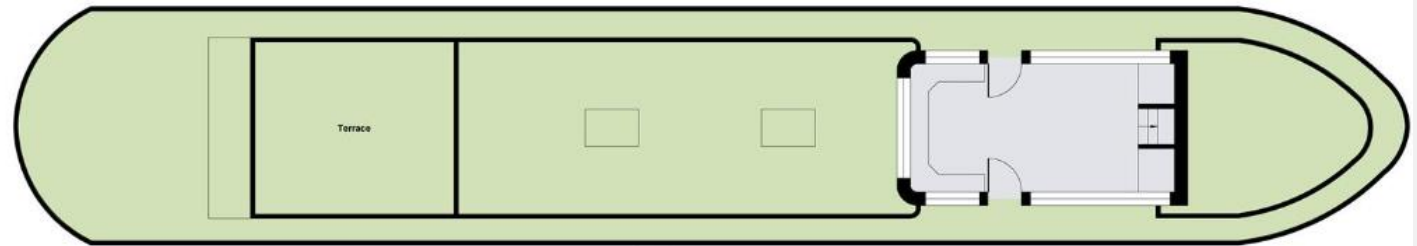
Maintenance fee: £400 monthly approx.



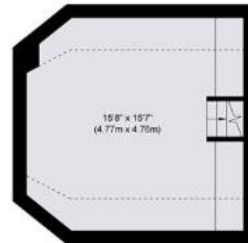


KEY INFORMATION

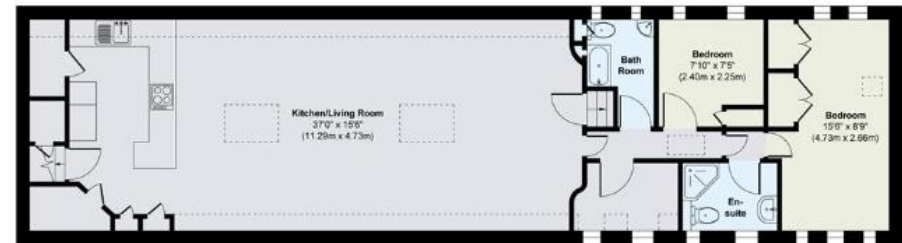
Local authority:	London Borough of Hounslow
Internal area:	1,370 sq. ft. / 127.29 sq. m.
No. of bedrooms:	2
Council tax band:	A



Ground Floor
Approximate Floor Area
171 sq. ft.
(15.93 sq. m)



Lower Ground Floor
Approximate Floor Area
220 sq. ft.
(21.25 sq. m)



Lower Ground Floor
Approximate Floor Area
969 sq. ft.
(90.01 sq. m)