

RIVERHOMES

**Magnolia Wharf
Chiswick W4**

**£3,500 per month
Unfurnished**



Magnolia Wharf Chiswick W4

A rare opportunity to rent this charming townhouse, set amongst well maintained communal gardens, within this attractive development in the Strand on the Green area of Chiswick. The accommodation briefly comprises two reception rooms with views over the communal gardens towards the River Thames, semi-open plan kitchen leading to a small private

patio, three bedrooms and two bathrooms. Further benefits include a private garage, attractive communal gardens and views of the River Thames. Magnolia Wharf, a secluded private development, accessed from Thames Road and also the river towpath, offers easy access to the historic pubs and restaurants of Strand on the Green.

KEY FEATURES

Three bedrooms

Two reception rooms

Two bathrooms

Semi-open plan kitchen

Private garage

Communal gardens

Views of the River Thames





ENERGY PERFORMANCE CERTIFICATE

Score	Energy rating	Current	Potential
92+	A		
81-91	B		84 B
69-80	C		
55-68	D	65 D	
39-54	E		
21-38	F		
1-20	G		

KEY INFORMATION

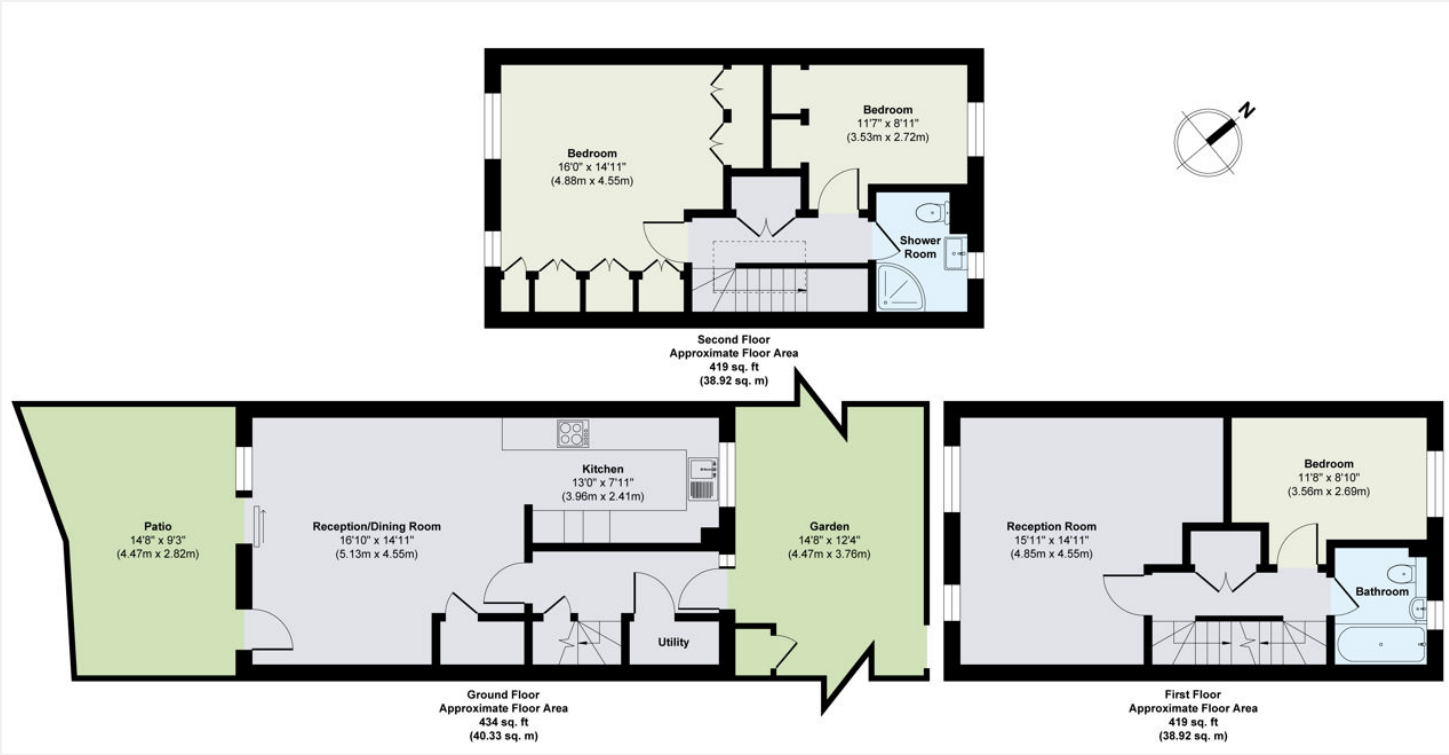
Local authority: London Borough of Hounslow

Internal area: 1,272 sq. ft. / 118.17 sq. m.

No. of bedrooms: 3

Council tax band: G

Availability: 1st October 2024



World Waterside Ltd trading as riverhomes for themselves and its clients give notice that 1: They are not authorised to make or give any representations or warranties in relation to the property either here or elsewhere, either on their own behalf or on behalf of their client or otherwise. 2: These particulars do not form part of any offer or contract and must not be relied upon as statements or representations of fact. Any areas, measurements or distances are approximate. The text, photographs and plans are for guidance only and are not necessarily comprehensive. 3: It should not be assumed that the property has all necessary planning, building regulation or other consents and any services, equipment or facilities have not been tested. 4: Lease details, service charges, ground rent (where applicable) and council tax are given as a guide only and should be checked and confirmed by your Solicitor prior to exchange of contracts. 5: They assume no responsibility and any intending purchasers or tenants must satisfy themselves by inspection or otherwise as to the correctness of each of the statements contained within these particulars. If you require clarification of any points please contact us.