



Cheyne Walk Chelsea SW10

Built in the 1950s with riveted mild steel construction, this barge measures 24.4 meters in length and 6.2 meters in beam. A full out-of-water survey was conducted in March 2023. The barge has been transformed into a floating, non-navigable houseboat.

On the upper level, there is a large kitchen-diner that leads to a bright and airy reception area. This, in turn, opens onto a heated, decked outdoor space, ideal for al fresco dining and entertaining during summer evenings.

On the lower deck, there is a versatile master bedroom that can also serve as a conference room, cinema, or party room. This space features state-of-the-art technology for quick functional changes and offers views of the Thames through a curved glass window just above the waterline. There is a separate

toilet and shower/steam room within this space as well. Bedroom 2 is generously sized at 17'11" x 15'2", and Bedroom 3 is a double bedroom with an additional wash basin. Further to this, there is also a main bathroom equipped with a bath and shower.

The boat is supplied with gas central heating, mains electricity, and water, ensuring modern comforts in a unique, historic setting.

PLEASE NOTE THIS IS BOAT ONLY AND DOES NOT COME WITH A MOORING.

KEY FEATURES

24.4 m. x 6.2 m. houseboat

3 bedrooms

2 bathrooms

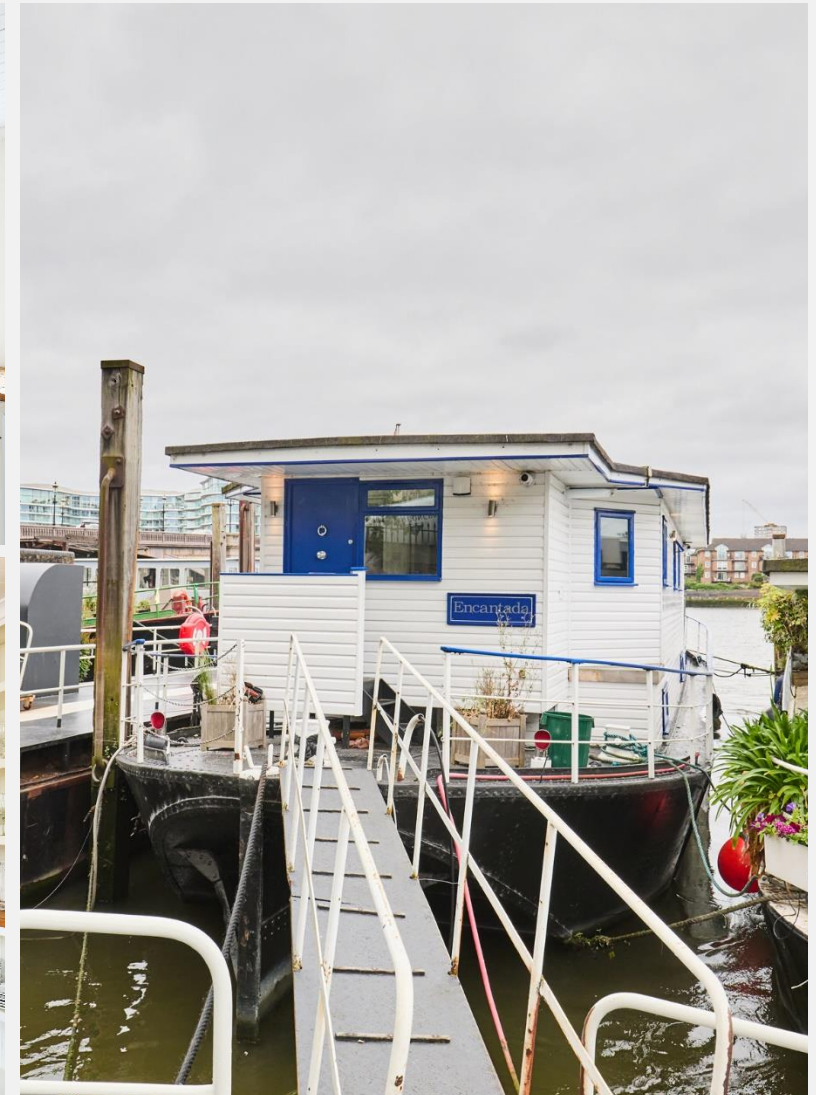
Large kitchen-diner

Heated, decked outdoor space

State-of-the-art technology

Full survey conducted in March 2023

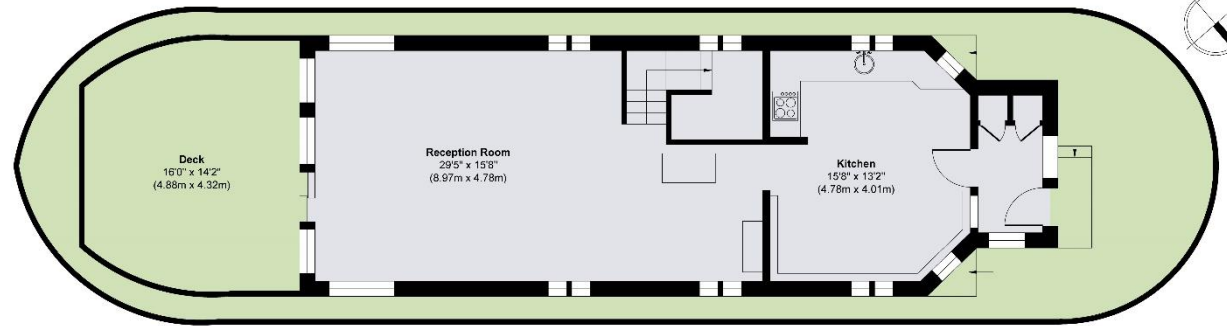
**Conveniently located close to shops,
restaurants and public transport**



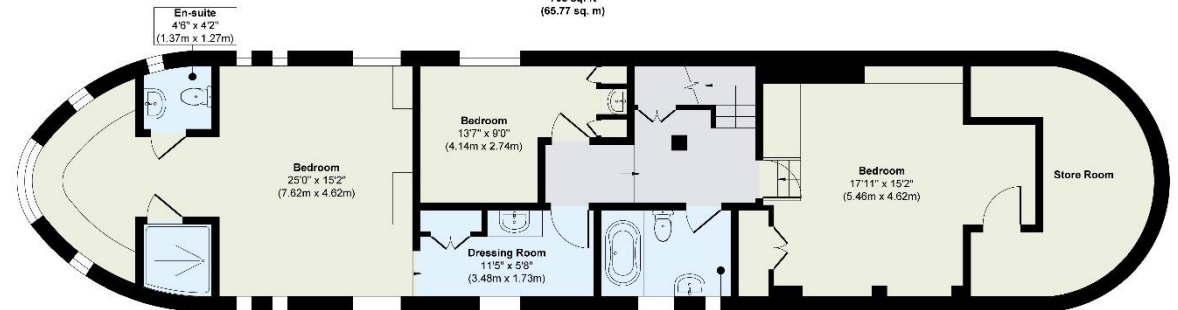


KEY INFORMATION

Local authority:	Royal Borough of Kensington and Chelsea
Internal area:	1,757 sq. ft. / 163.22 sq. m.
Council tax band:	F
No. of bedrooms:	3



First Floor
Approximate Floor Area
708 sq. ft
(65.77 sq. m)



Lower Deck
Approximate Floor Area
1049 sq. ft
(97.45 sq. m)