



Osiers Road Wandsworth SW18

Located on the eighth floor of this wonderful modern development, this fantastic one bedroom apartment has a bright open plan kitchen/reception room, contemporary bathroom, large bedroom and a private balcony that's perfect for entertaining. This stunning property is ideally located for swift links to the city with Wandsworth Town and East Putney stations within easy walking distance. The Thames Clipper docks nearby offering a scenic and convenient commute, just moments from your doorstep to the City and Canary Wharf.

KEY FEATURES

One bedroom apartment

Modern development

Open plan kitchen/reception

Private balcony

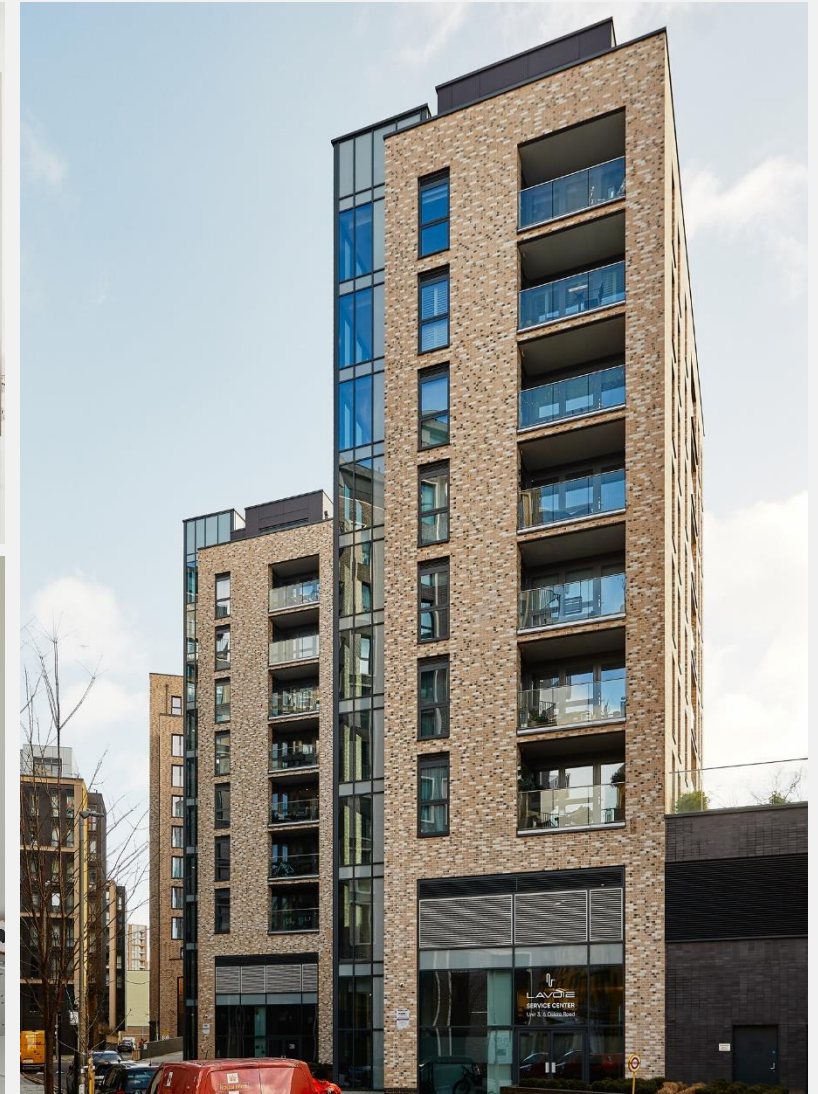
Conveniently located close to shops, restaurants and public transport

Local Authority: London Borough of Wandsworth

Council tax: Band D - £ 950.10 for 2023/24

Lease length: 116 years remaining

Service charges: £2,600 per year approx.





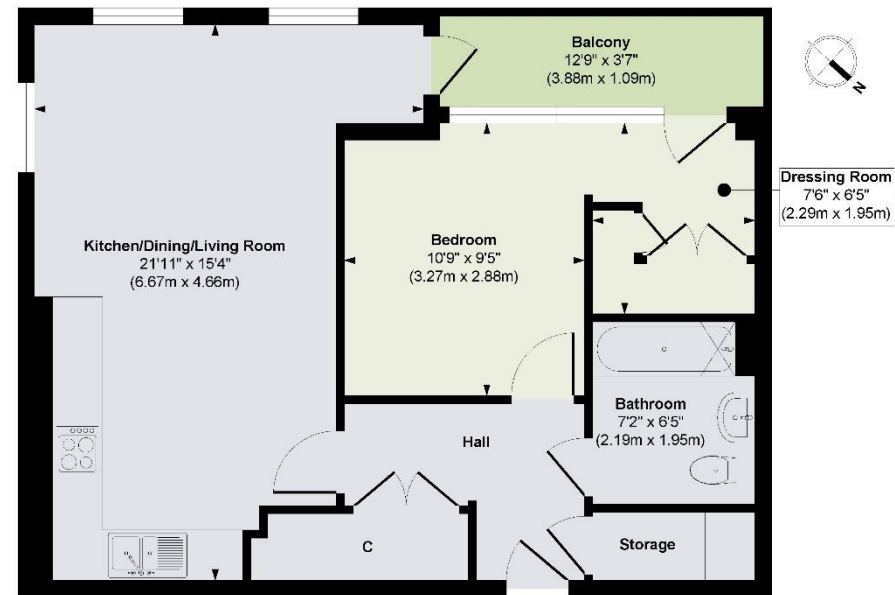
ENERGY PERFORMANCE CERTIFICATE

Score	Energy rating	Current	Potential
92+	A		
81-91	B	91 B	91 B
69-80	C		
55-68	D		
39-54	E		
21-38	F		
1-20	G		

KEY INFORMATION

Local authority:	London Borough of Wandsworth
Internal area:	Internal area 561 sq. ft. / 52.14 sq. m.
Council tax band:	D - £ 950.10 for 2023/24
No. of bedrooms:	1

OSIERS ROAD, WANDSWORTH SW18



Eighth floor

Approx. Gross Internal Floor Area 561 sq. ft / 52.14 sq. m
Illustration for identification purposes only, measurements are approximate, not to scale.