

# RIVERHOMES

Oxford Road South  
Chiswick W4

£1,750,000  
Freehold





## Oxford Road South Chiswick W4

A substantial semi-detached family house with versatile accommodation in a quiet residential road, close to the River Thames, Gunnersbury Underground Station and Kew Bridge National Rail Station. The house offers in excess of 2,900 sq. ft. of internal living space, the added benefit of a self-contained annex with numerous working areas and a 200 ft south facing rear garden that has been developed over the current owners tenure. The main house is set over three floors; the entrance level offers two separate reception rooms and a roof terrace overlooking the

manicured rear garden. To the lower ground floor, you will find a contemporary 26' kitchen dining/family room with floor to ceiling triple pane glazed sliding doors to the rear garden, a gym and a separate shower room. To the first floor are five well-proportioned bedrooms and two bathrooms. The separately accessed annex building to the side of the property is front to back and provides three separate office spaces and a separate kitchenette and cloakroom.

### KEY FEATURES

**Semi-detached family house**

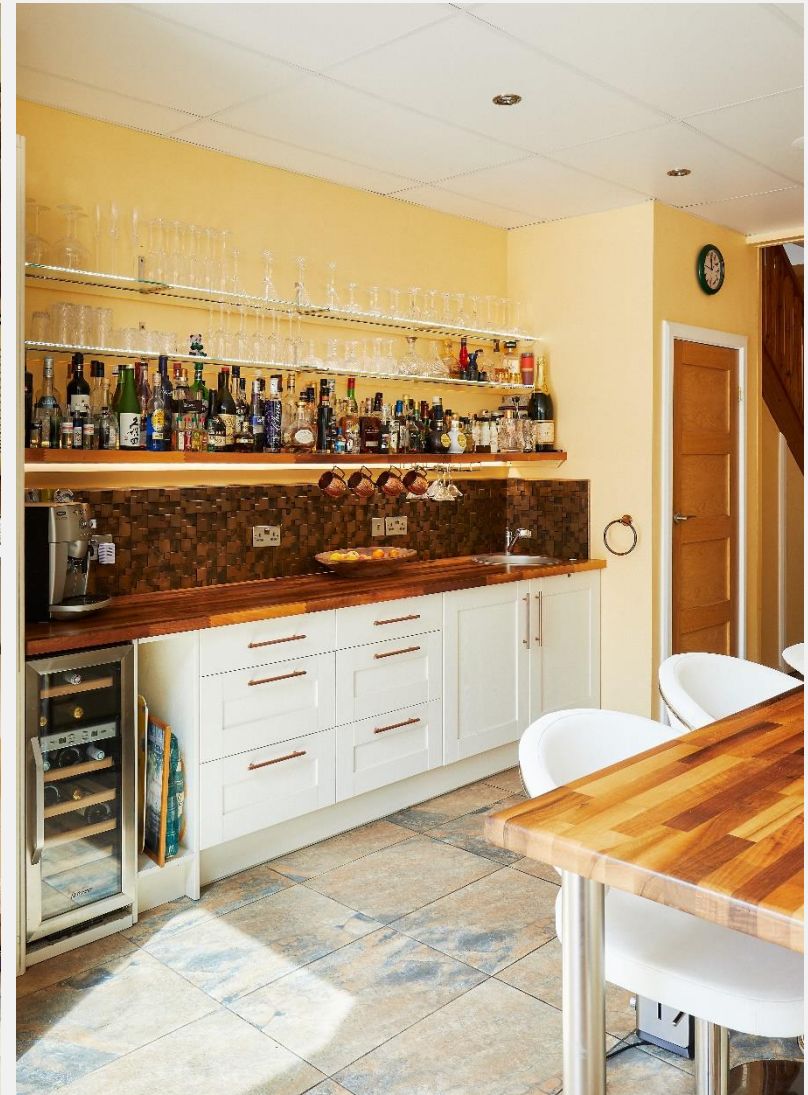
**Five bedroom home**

**Self-contained annex**

**South facing rear garden**

**Roof terrace**

**Separately accessed office building**







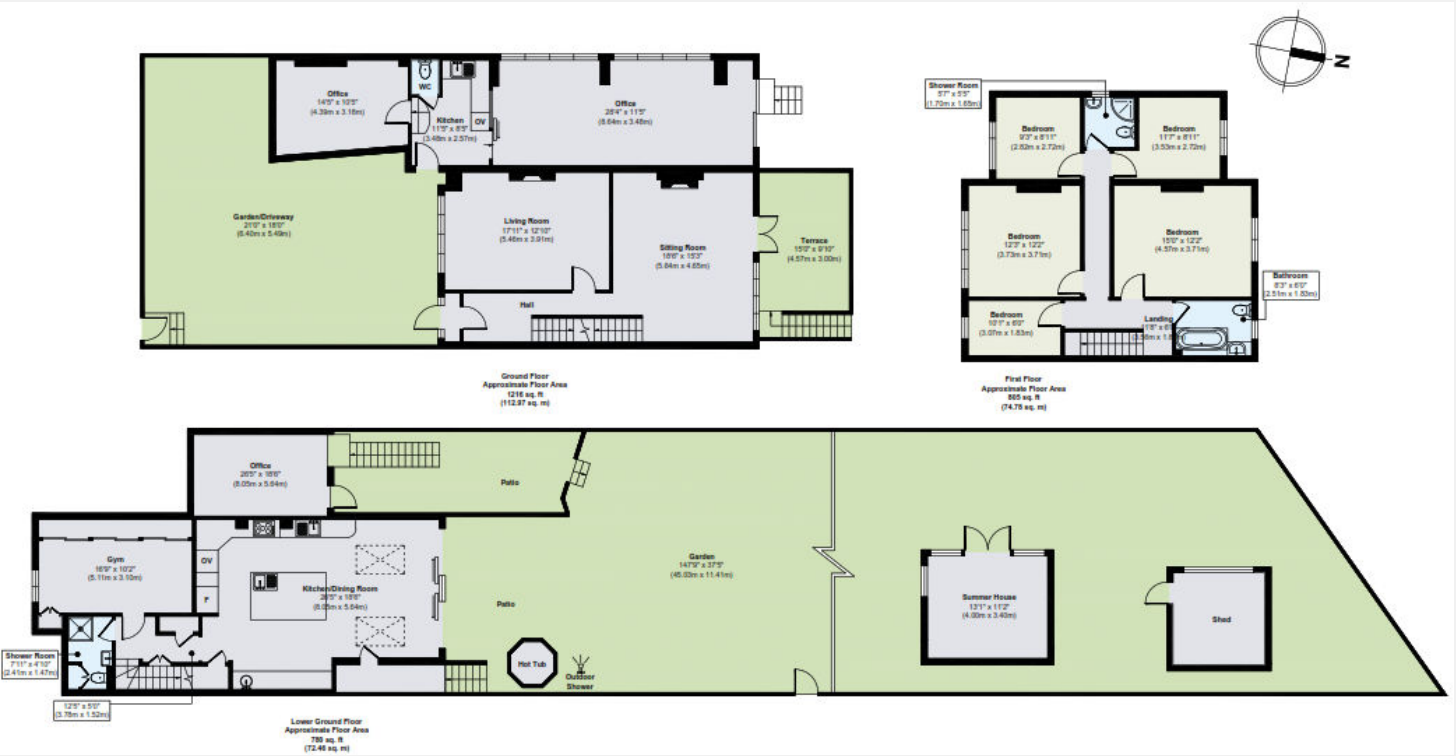


ENERGY PERFORMANCE CERTIFICATE

| Score | Energy rating | Current | Potential |
|-------|---------------|---------|-----------|
| 92+   | A             |         |           |
| 81-91 | B             |         |           |
| 69-80 | C             |         | 77   C    |
| 55-68 | D             | 59   D  |           |
| 39-54 | E             |         |           |
| 21-38 | F             |         |           |
| 1-20  | G             |         |           |

KEY INFORMATION

|                  |                              |
|------------------|------------------------------|
| Local authority: | London Borough of Hounslow   |
| Internal area:   | 2,935 sq. ft. / 272.66 sq. m |
| No. of bedrooms: | 5                            |
| Tax Band:        | G                            |



World Waterside Ltd trading as riverhomes for themselves and its clients give notice that 1: They are not authorised to make or give any representations or warranties in relation to the property either here or elsewhere, either on their own behalf or on behalf of their client or otherwise. 2: These particulars do not form part of any offer or contract and must not be relied upon as statements or representations of fact. Any areas, measurements or distances are approximate. The text, photographs and plans are for guidance only and are not necessarily comprehensive. 3: It should not be assumed that the property has all necessary planning, building regulation or other consents and any services, equipment or facilities have not been tested. 4: Lease details, service charges, ground rent (where applicable) and council tax are given as a guide only and should be checked and confirmed by your Solicitor prior to exchange of contracts. 5: They assume no responsibility and any intending purchasers or tenants must satisfy themselves by inspection or otherwise as to the correctness of each of the statements contained within these particulars. If you require clarification of any points please contact us.