

# RIVERHOMES

**Cheyne Walk  
Chelsea SW10**

£3,600 per month  
Furnished





## Cheyne Walk Chelsea SW10

Situated on one of the desirable outer berths of the Cheyne Walk Moorings at Chelsea is this beautiful houseboat with unrestricted views of the Thames. Split over two levels, this very stylish home comprises on the lower deck one double bedroom with roll top bath and a wet room. The upper deck has an open plan kitchen, reception room with space for a dining area and access to a large south facing deck. With all of the comforts of a typical home, such as mains electricity, water, sewerage and telephone services, all residents of this charming mooring also benefit from a night

watchman and CCTV service and an on-site maintenance team.

Located close to a number of transport options, with the Thames Clipper moments away at Cadogan Pier and National Rail Services and Overground at Imperial Wharf. The location is a very desirable part of Chelsea - close to the boutiques and restaurants of the Kings Road.

### KEY FEATURES

**Local Authority: London Borough of Kensington and Chelsea**

**Internal Area: 549 sq. ft.**

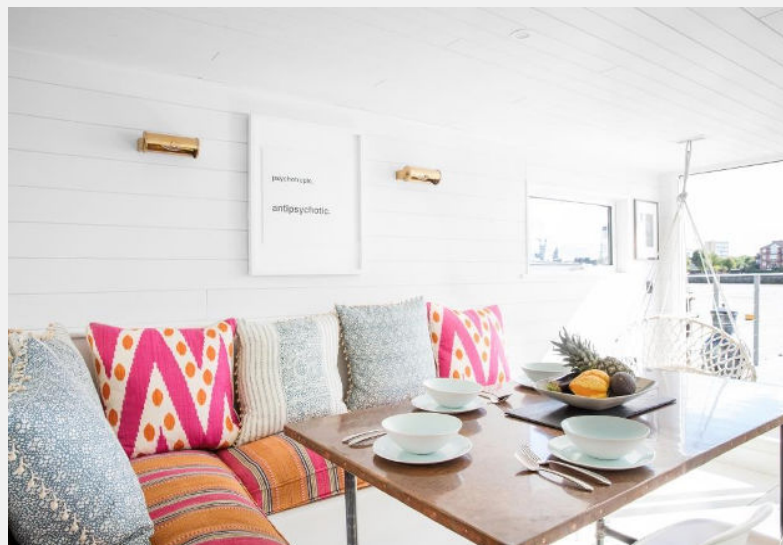
**Council Tax: Band D**

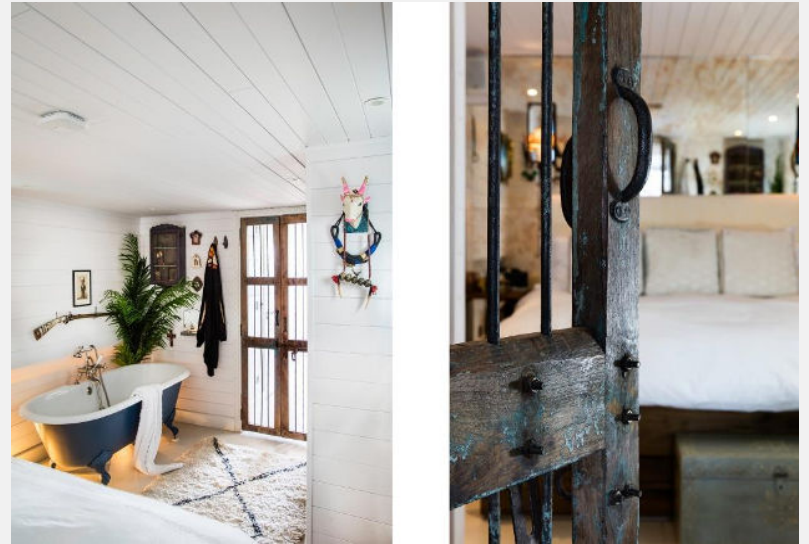
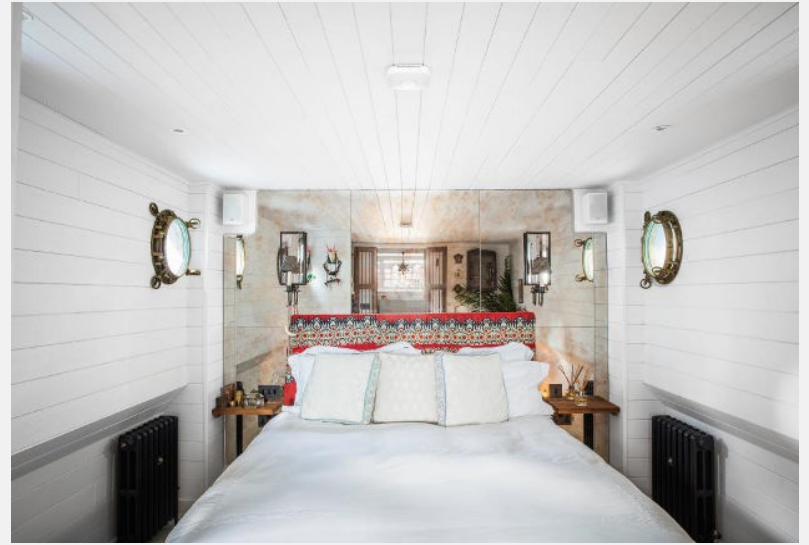
**One double bedroom**

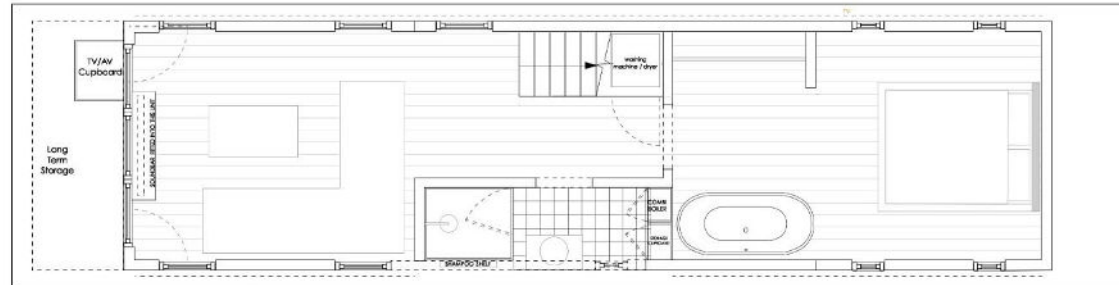
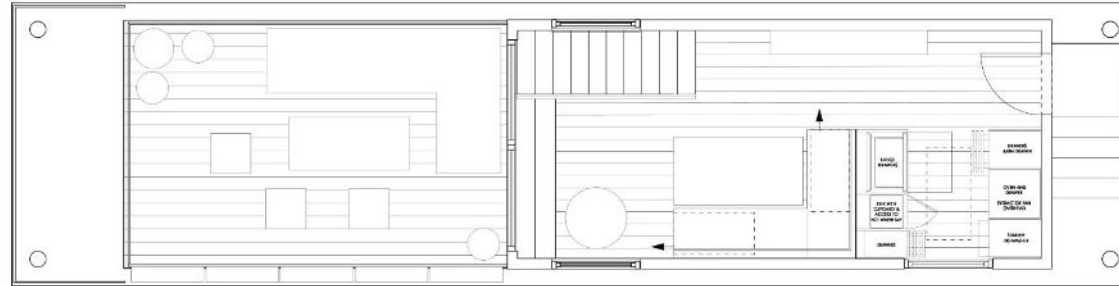
**Reception room with space for dining area**

**Large south facing deck area**

**Night Watchman and CCTV service**







**1** UPPER FLOOR PLAN - FURNITURE ARRANGEMENT  
P200 1:50 @ A3

Project <b>HOUSEBOAT BLUE MOON</b> 106 CHEYNE WALK Drawing name <b>UPPER FLOOR PLAN</b>	Date 27.08.2015 Project no. BLU01	Scale 1:50 @ A3 Drawing no. 200	<b>REVISIONS</b> 26-10 Rear wall extended by 300mm amendment
---	--	--	---