

RIVERHOMES

**Cheyne Walk
Chelsea SW10**

**£150,000
Residential**



Cheyne Walk Chelsea SW10

Situated at prestigious Cheyne Walk Moorings, 'Chelsea Muse' is a well-designed one bedroom houseboat. This bespoke floating home benefits from direct river views and a sunny deck. Split over two levels, there is abundant living space and a good size bedroom. A flexible arrangement on the upper deck provides quick and easy guest accommodation in the form of screened bedroom space. This could easily be partitioned off to provide a permanent second bedroom if so desired. With all the comforts of a typical home, such as mains electricity, water,

sewerage and telephone services, all residents benefit from a night watchman, CCTV coverage, and an on-site maintenance team. Cheyne Walk is close to a number of transport links, the green spaces of Battersea Park, and shopping and leisure amenities of Kings Road and Sloane Square.

KEY FEATURES

1 bedroom

Sun deck with direct river views

Night watchman and CCTV

On-site maintenance team

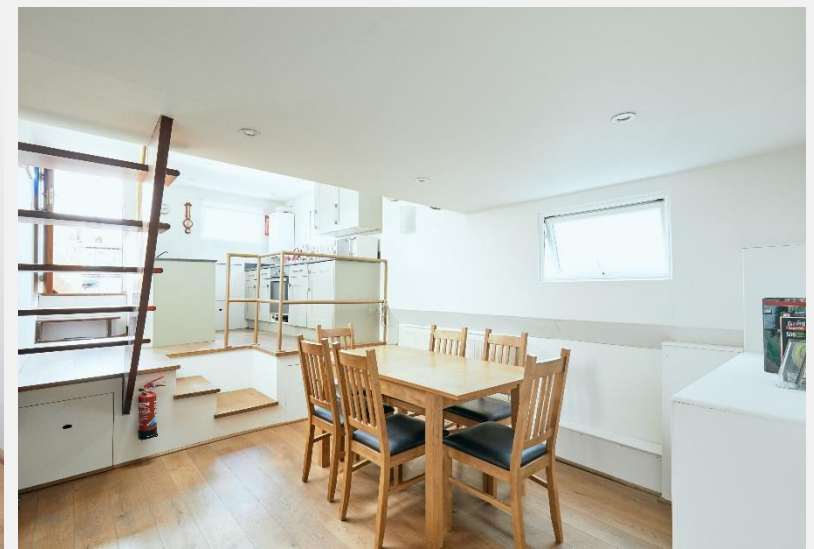
Located ideally for the many amenities and transport links of the area

Possibility of creating a permanent second bedroom

Annual mooring fee: £17,572 per year

4.5 years left on the mooring licence. Thereafter a 10 year licence is £227,353 or £368,000 for a 20 year one. These licences and cost of boat are all payable in cash only.





KEY INFORMATION

Local authority: Royal Borough of Kensington and Chelsea

Council tax band: D

Internal area: 768 sq. ft. / 71 sq. m.

Garden area: Deck

No. of bedrooms: 1

