

RIVERHOMES

Russell Close
Chiswick W4

OIEO £1,500,000
Share of Freehold



Russell Close Chiswick W4

A rare opportunity to buy this spectacular 4 bedroom, 3 bathroom, duplex penthouse apartment on Chiswick riverside within a sought-after gated riverside development. With breath-taking panoramic views overlooking the River Thames from Barnes riverside to Hammersmith embankment from its two terraces. The property, which benefits from a large garage and off-street parking, is situated on the 3rd and 4th floors and accessed to the front door by lift. Downstairs, the property has a modern fitted kitchen, a large south-facing living room with terrace, a 4th

bedroom/study and shower room with toilet. Stair access to the 4th floor upstairs, which comprises the master bedroom with en suite bathroom and terrace, two further bedrooms and a family bathroom. The local amenities of both Chiswick and Barnes are a short walk away, the E3 bus runs frequently into Hammersmith Broadway and the motorist is well served by the A3/A316 & M3 for links in and out of town.

KEY FEATURES

4 bedrooms

3 bathrooms

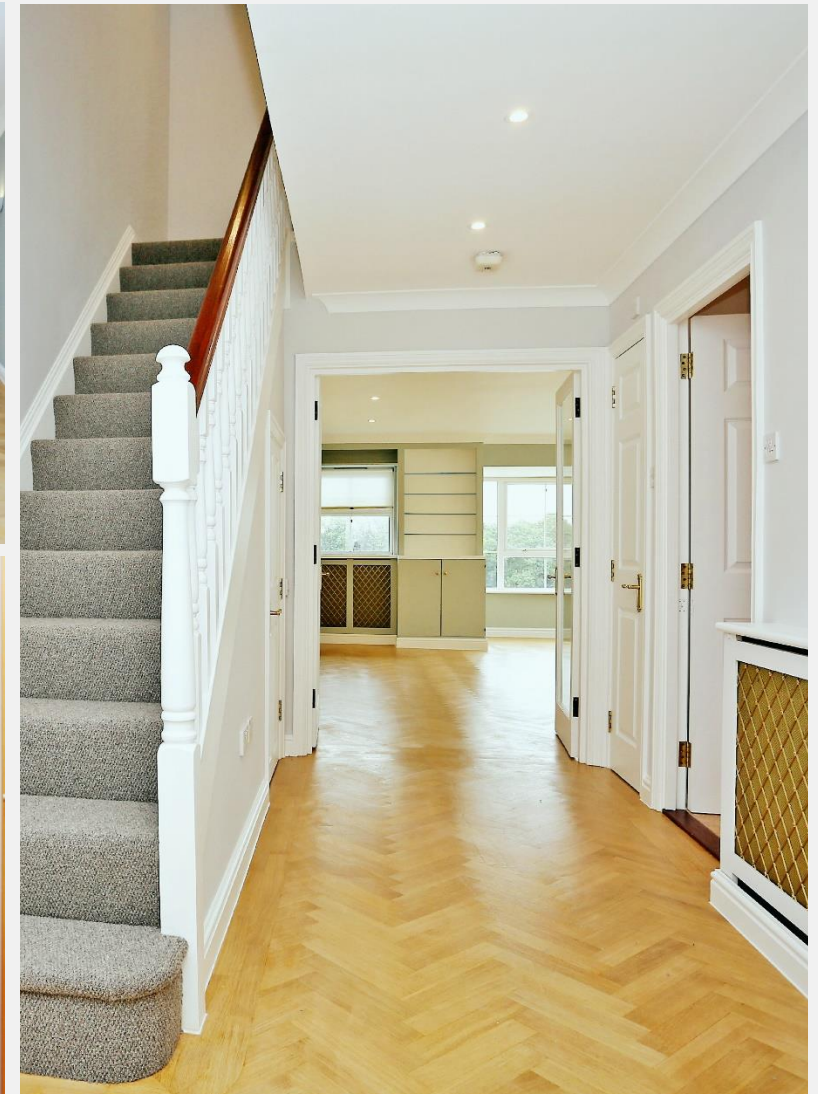
Sought-after gated development

Breath-taking panoramic views

Two terraces

Large garage

Off-street parking





ENERGY PERFORMANCE CERTIFICATE

Score	Energy rating	Current	Potential
92+	A		
81-91	B		
69-80	C	80 c	80 c
55-68	D		
39-54	E		
21-38	F		
1-20	G		

KEY INFORMATION

Local authority:	London Borough of Hounslow
Internal area:	1,453 sq. ft. / 135 sq. m.
No. of bedrooms:	4
Tax Band:	G

